



L'ARCHE®
Greater
Washington, D.C.

HEART OF L'ARCHE CELEBRATION

2024 Sponsorship Package



Welcome!

As a community of people with and without disabilities, we believe it's possible to shape **a world that welcomes every person as a fully valued and meaningfully contributing member of society.**

But it's only possible when friends like you participate in this vision! You can help create a more human society as a sponsor for our annual Heart of L'Arche Celebration event. This benefit builds our capacity to make known the gifts of people with disabilities and care for each other in the year ahead.

Here's how you can make a more human society possible in 2024!



ABOUT L'ARCHE GWDC

What would it be like for every person to experience true belonging and community? L'Arche GWDC has been a model for this since 1983, creating a lifelong home and community for people with and without disabilities.

Our approach to inclusive community is based on:

- **Lifelong care and relationships** are foundational.
- **Education and advocacy** are essential.
- **Mission of transformation** is the result.

We celebrate the unique value of every person, recognizing and accepting our need of one another, and working together toward a more human society.



Becoming More Human, Together

THE EVENT

Sunday

April 28, 2024



Join us for a garden gala to benefit the transformational work of L'Arche GWDC.

Reception and Program

3pm-5pm

The Atrium at

Meadowlark Botanical Gardens

Vienna, VA

YOUR SPONSORSHIP IMPACT



When friends like you partner with us, a more human society becomes a reality.

Your investment through the Heart of L'Arche Celebration makes a daily difference for our Core Members and Assistants, filling the gaps so we can more easily engage in regular life—running errands, volunteering, attending church, going to appointments, and more.

With your support, we can pay our Assistants the meaningful wages they deserve.

Your sponsorship will make a daily difference for Core Members, Assistants, and community members.

PARTNERSHIP OPPORTUNITIES FOR YOU

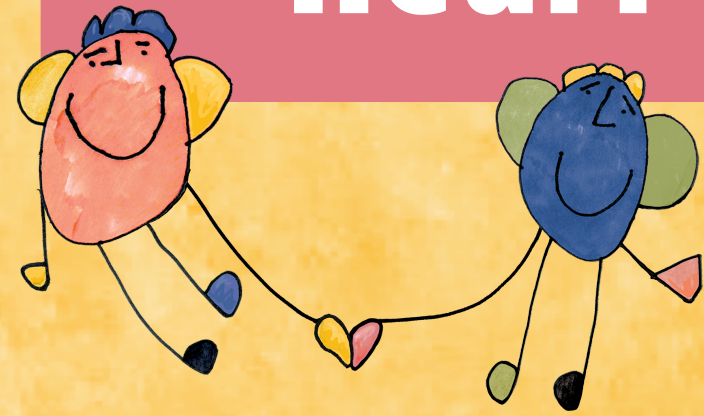
By taking the next step and partnering with L'Arche GWDC today, you will remove the barriers between people with and without disabilities and unlock the beauty of mutual interdependence and transformation for all.

Sponsoring this fundraiser aligns our missions and markets your organization to people in Northern Virginia, DC, Maryland, and beyond.

Each sponsor level provides opportunities to promote your organization to our guests, creating new relationships in our well-connected community.



Heart of L'Arche Sponsorship Levels & Benefits



Presenting \$10,000	Leadership \$5,000	Community \$2,500	Advocacy \$1,000
------------------------	-----------------------	----------------------	---------------------

8	6	4	2
Full page ad	Half page ad	Logo	Logo
Prominent listing	Prominent listing	Listing	Listing
Logo	Logo	Acknowledgment	Acknowledgment

- Event admissions
- Exclusive Meadowlark Garden Tour
- Acknowledgement during event
- Event program
- Event marketing and website
- 2024 Annual Report
- Social media
- Volunteer day



Laurie, Eva-Elizabeth, and Ruth at the 2023 Heart of L'Arche Celebration

SPONSOR SPOTLIGHT

“

"For over 25 years, ALCO Pharmacy has provided customized pharmacy services to providers of intellectual disability residential programs throughout the region, and we are grateful to work with unique organizations like L'Arche who share our passion for improving the lives of the individuals we serve."

-Ruth Miller, ALCO Pharmacy
Event sponsor for 6 years running

”



MANY THANKS TO OUR 2023 SPONSORS!

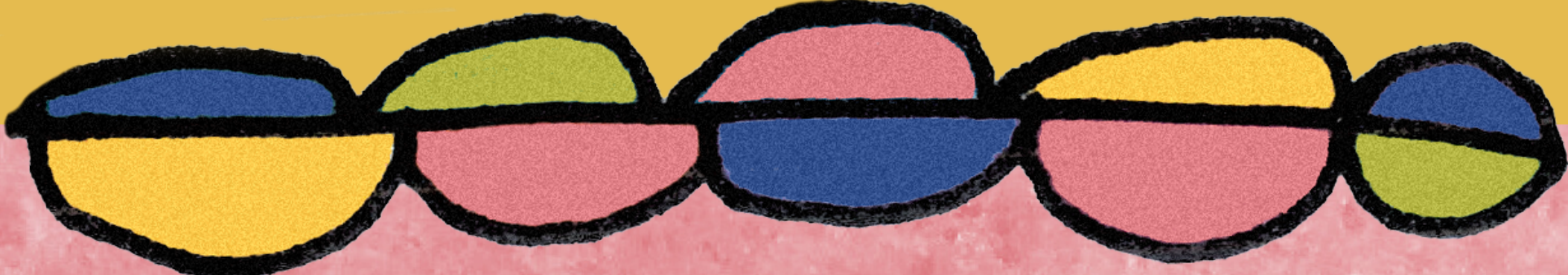


GEORGETOWN UNIVERSITY
Center for Social Justice
Research, Teaching & Service



Other sponsors: Catholic Archdiocese of Washington Deaf and Disabilities Ministry, Guardian Fire Protection, Northern Virginia Doctors Of Optometry, Roca Dental, Virginia Theological Seminary

READY TO INVEST IN A MORE HUMAN WORLD?!



To become a sponsor today visit
larche-gwdc.org/sponsor

Secure
your
benefits by
March 28th

Questions?  (202) 232-4539  events@larche-gwdc.org





larche-gwdc.org



[larche_gwdc](https://www.instagram.com/larche_gwdc)



[@LarcheGWDC](https://www.facebook.com/LarcheGWDC)

THANK YOU



L'ARCHE®
Greater
Washington, D.C.