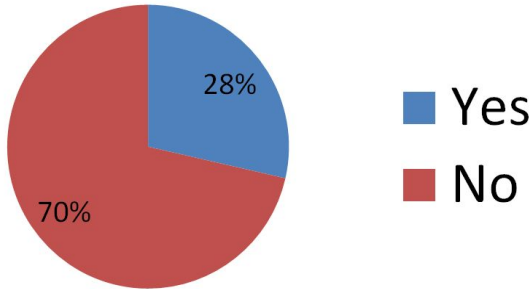
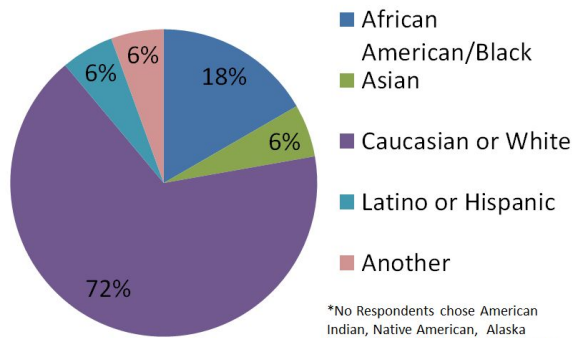


Demographics 2016- Basic Data

Do you have a disability?



Race/Ethnicity

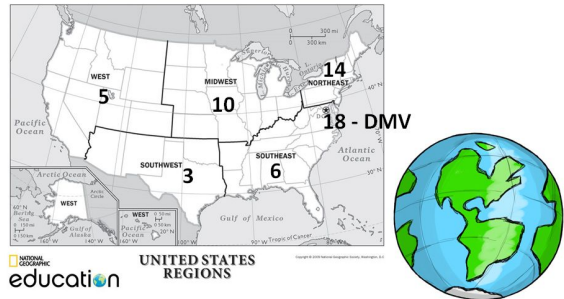


*No Respondents chose American Indian, Native American, Alaska Native, Middle Eastern, North African or Pacific Islander

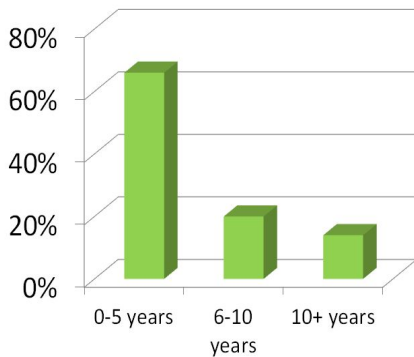
Our Languages:

Spanish, English, Italian, French, Bulgarian, German, Tigrigna, Oromigna, Thai, Amharic, American Sign Language, Norway Dutch, & Mandarin

Where did you primarily live as a child?

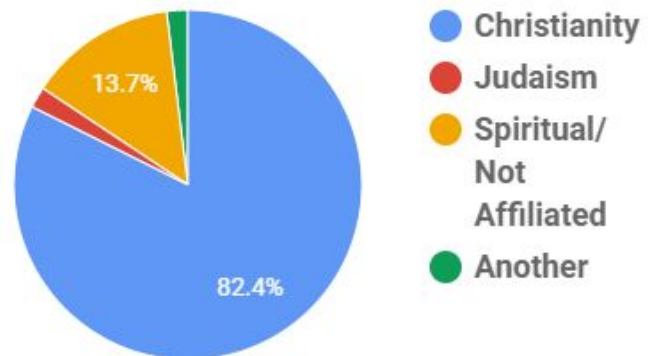


How many years have you been with L'Arche

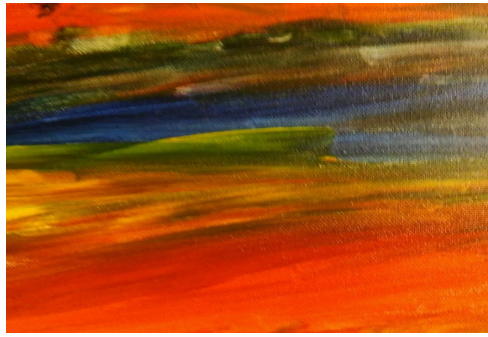



Four respondents have been with another L'Arch community

Religious/Spiritual Practice



Thank You!



September 2016

Hi Everyone,

You are beautiful, a child of God, and we are One. Please allow these words to rest in your heart as you review these two documents and grow in awareness of our diversity and our unity.

Over the summer, Charles, Eva-Elizabeth, Caitlin, and James also composed and shared a demographics survey with members, board members, and employees. We are very happy with our 75% response rate. Thank you to the 58 respondents who submitted a survey from June - August 2016. The next page shows some discrete data we have gathered. We hope to continue to examine the data and invite you to think about what your home/team might be interested in learning.

The Personal Identity Reflection was developed as Hazel, Eva-Elizabeth, Crisely, Eileen, and James met around the dining room at Highland House one spring afternoon. We have included questions that can be relevant for everyone to consider. L'Arche's Identity Statement says, "We celebrate the unique value of every person and recognize our need for one another." We hope you will find this resource helpful as you grow mutuality, vulnerability, and trust with others in L'Arche GWDC.

Thank you for reviewing this information and for supporting L'Arche GWDC's Diversity Commission.

Love,

Charles and James